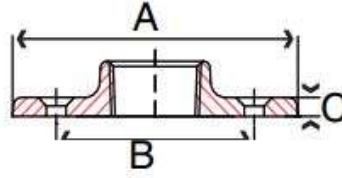




Floor Flange, Malleable Iron

CLASS 150, Galvanized

Inches / Pounds



Part #	Bore NPT Size (inch)	Outside Diam. of Flange (A)	Thick. of Flange (C)	No. Of Holes	Diam. of Bolt Holes	Diam. of Bolt Circle (B)	Approx. Weight (in Lbs.)
KTF.25MIG	1/4	2.83	0.31	4	0.28	2.00	0.26
KTF.375MIG	3/8	2.75	0.26	4	0.28	1.90	0.25
KTF.5MIG	1/2	3.00	0.36	4	0.28	2.10	0.35
KTF.75MIG	3/4	3.40	0.26	4	0.28	2.40	0.49
KTF1MIG	1	3.80	0.26	4	0.28	2.80	0.64
KTF1.5MIG	1-1/2	4.60	0.30	4	0.32	3.45	1.11
KTF2MIG	2	5.20	0.30	4	0.32	4.00	1.55
KTF2.5MIG	2-1/2	6.75	0.37	4	0.40	5.00	3.29
KTF3MIG	3	7.88	0.45	4	0.45	6.00	4.50
KTF4MIG	4	9.50	0.45	4	0.45	7.00	7.91

* Dimensions conform to ASME B16.3

* Castings conform to ASTM A197

* Threads conform to ASME B1.20.1

* UL Listed and FM Approved at 300 PSI

* Hot-dipped galvanized per ASTM A153