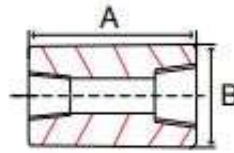




Forged Reducing Couplings

Carbon Steel, Class 3000

Inches / Pounds



Part #	NPT Thread Sizes (inch)	Length (A)	Width (B)	Approx Weight (in Lbs.)
KRC.25X.125	1/4 x 1/8	1.38	0.75	0.10
K3RC.375X.125	3/8 x 1/8	1.50	0.88	0.10
K3RC.375X.25	3/8 x 1/4	1.50	0.88	0.10
K3RC.5X.125	1/2 x 1/8	1.88	1.12	0.20
K3RC.5X.25	1/2 x 1/4	1.88	1.12	0.40
K3RC.5X.375	1/2 x 3/8	1.88	1.12	0.20
K3RC.75X.125	3/4 x 1/8	1.88	1.12	0.20
K3RC.75X.25	3/4 x 1/4	2.00	1.33	0.40
K3RC.75X.375	3/4 x 3/8	2.00	1.33	0.40
K3RC.75X.5	3/4 x 1/2	2.00	1.33	0.40
K3RC1X.125	1x 1/8	2.38	1.75	0.80
K3RC1X.25	1x 1/4	2.38	1.75	0.80
K3RC1X.375	1 x 3/8	2.38	1.75	0.80
K3RC1X.5	1x 1/2	2.38	1.75	0.80
K3RC1X.75	1 x 3/4	2.38	1.75	0.80
K3RC1.25X.25	1-1/4 x 1/4	2.62	1.97	1.50
K3RC1.25X.375	1-1/4 x 3/8	2.62	2.25	1.50
K3RC1.25X.5	1-1/4 x 1/2	2.62	2.25	1.50
K3RC1.25X.75	1-1/4 x 3/4	2.62	2.25	1.50
K3RC1.25X1	1-1/4 x 1	2.62	2.25	1.50
K3RC1.5X.25	1-1/2 x 1/4	3.12	2.50	2.10
K3RC1.5X.375	1-1/2 x 3/8	3.12	2.50	2.10
K3RC1.5X.5	1-1/2 x 1/2	3.12	2.50	2.10
K3RC1.5X.75	1-1/2 x 3/4	3.12	2.50	2.10
K3RC1.5X1	1-1/2 x 1	3.12	2.50	2.80
K3RC1.5X1.25	1-1/2 x 1-1/4	3.12	2.50	2.10
K3RC2X.125	2 x 1/8	3.38	3.00	3.00
K3RC2X.25	2 x 1/4	3.38	3.00	3.00
K3RC2X.375	2 x 3/8	3.38	3.00	3.00
K3RC2X.5	2 x 1/2	3.38	3.00	3.00
K3RC2X.75	2 x 3/4	3.38	3.00	3.00
K3RC2X1	2 x 1	3.38	3.00	4.50
K3RC2X1.25	2 x 1-1/4	3.38	3.00	3.30
K3RC2X1.5	2 x 1 1/2	3.38	3.00	3.90

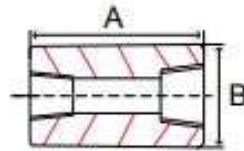
(CONTINUED ON NEXT PAGE)



Forged Reducing Couplings

Carbon Steel, Class 3000

Inches / Pounds



Part #	NPT Thread Sizes (inch)	Length (A)	Width (B)	Approx Weight (in Lbs.)
K3RC2.5X.5	2-1/2 x 1/2	3.62	3.62	5.70
K3RC2.5X1	2-1/2 x 1	3.62	3.62	4.5
K3RC2.5X1.25	2-1/2 x 1-1/4	3.62	3.62	4.5
K3RC2.5X1.5	2-1/2 x 1-1/2	3.62	3.62	4.5
K3RC2.5X2	2-1/2 x 2	3.62	3.62	4.50
K3RC3X.75	3 x 3/4	4.25	4.25	6.70
K3RC3X1	3 x 1	4.25	4.25	6.70
K3RC3X1.25	3 x 1-1/4	4.25	4.25	6.70
K3RC3X1.5	3 x 1-1/2	4.25	4.25	6.70
K3RC3X2	3 x 2	4.25	4.25	6.70
K3RC3X2.5	3 x 2-1/2	4.25	4.25	6.70
K3RC4X1.5	4 x 1-1/2	4.75	5.50	11.90
K3RC4X2	4 x 2	4.75	5.50	11.90
K3RC4X2.5	4 x 2-1/2	4.75	5.50	11.90
K3RC4X3	4 x 3	4.75	5.50	11.90

* Forged carbon steel material conforms to ASTM SA105N, NORMALIZED

* Threading per ASME B1.20.1

* Dimensions conform to ASME B16.11