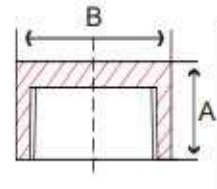




NPT Threaded Caps

Forged 316 Stainless Steel, Class 3000

Inches / Pounds



Part #	NPT Size	Height (A)	Outside Diameter (B)	Approximate Weight (in Lbs)
K3C.125SS	1/8	0.75	0.62	0.04
K3C.25SS	1/4	1.00	0.75	0.08
K3C.375SS	3/8	1.00	0.88	0.10
K3C.5SS	1/2	1.25	1.12	0.2
K3C.75SS	3/4	1.44	1.33	0.3
K3C1SS	1	1.62	1.75	0.8
K3C1.25SS	1 1/4	1.75	2.25	1.3
K3C1.5SS	1 1/2	1.75	2.50	1.5
K3C2SS	2	1.88	3.00	2.4
K3C2.5SS	2 1/2	2.38	3.62	4.8
K3C3SS	3	2.56	4.25	7.7

****Forged 316 stainless steel material conforms to ASME A182***

**** Dimensions conform to ASME B16.11***

****NPT Threads on all fittings conform to ASME B1.20.1***