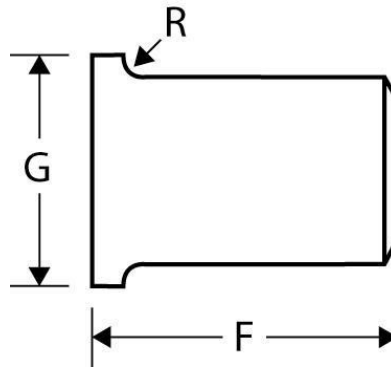


Lap Joint Stub Ends

Schedule 80 and XS

Inches / Pounds



Part #	Nominal Pipe Size	Outside Diameter	Inside Diameter	Wall and Lap Thickness	Lap Diameter (G)	Fillet Radius (R)	Overall Length (F)	Pipe Sched.	Approx Weight (LBS)
K80SE.5	1/2	0.84	0.546	0.147	1.38	0.12	3	XS/80	0.38
K80SE.75	3/4	1.05	0.742	0.154	1.69	0.12	3	XS/80	0.51
K80SE1	1	1.32	0.96	0.179	2.00	0.12	4	XS/80	1.00
K80SE1.25	1 1/4	1.66	1.28	0.191	2.50	0.19	4	XS/80	1.3
K80SE1.5	1 1/2	1.90	1.50	0.200	2.88	0.25	4	XS/80	1.75
K80SE2	2	2.38	1.94	0.218	3.63	0.31	6	XS/80	3.00
K80SE2.5	2 1/2	2.88	2.32	0.276	4.13	0.31	6	XS/80	4.5
K80SE3	3	3.50	2.90	0.300	5.00	0.38	6	XS/80	6.50
K80SE3.5	3 1/2	4.00	3.36	0.318	5.50	0.38	6	XS/80	8
K80SE4	4	4.50	3.83	0.337	6.12	0.44	6	XS/80	9.50
K80SE5	5	5.56	4.81	0.375	7.31	0.44	8	XS/80	17
K80SE6	6	6.63	5.76	0.432	8.50	0.50	8	XS/80	23
K80SE8	8	8.63	7.63	0.500	10.63	0.50	8	XS/80	32
K80SE10	10	10.75	9.75	0.500	12.75	0.50	10	XS/60	53
K80SE12	12	12.75	11.75	0.500	15.00	0.50	10	XS*	62
K80SE14	14	14.00	13.00	0.500	16.25	0.50	12	XS*	75
K80SE16	16	16.00	15.00	0.500	18.50	0.50	12	XS/40	87
K80SE18	18	18.00	17.00	0.500	21.00	0.50	12	XS*	101
K80SE20	20	20.00	19.00	0.500	23.00	0.50	12	XS/30	114
K80SE24	24	24.00	23.00	0.500	27.25	0.50	12	XS*	138

* Dimensions conform to ASME B16.9 & material conforms to ASTM SA-234 Grade B.

* XS* designates Extra Strong (extra strong wall).

This size and thickness do not correspond to any pipe schedule number.