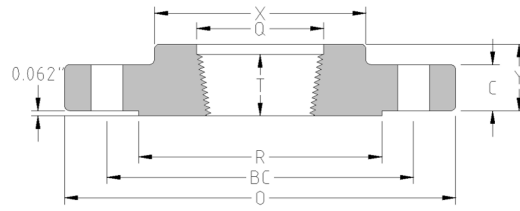




Threaded Flange

CLASS 300, Carbon Steel

Inches / Pounds



| Part # | Nominal Pipe Size | Outside Diam. of Flange (O) | Thick. of Flange (C) | Diam. of Raised Face (R) | Diam. of Hub at Base (X) | Length thru Hub (Y) | Min. Thread Length (T) | Min. Counter Bore (Q) | No. Of Holes | Diam. Of Holes | Diam. Of Bolts | Diam. Of Bolt Circle | Approx. Weight (in Lbs.) |
|----------|-------------------|-----------------------------|----------------------|--------------------------|--------------------------|---------------------|------------------------|-----------------------|--------------|----------------|----------------|----------------------|--------------------------|
| K3TF.5 | 1/2 | 3.75 | 0.50 | 1.38 | 1.50 | 0.88 | 0.62 | 0.93 | 4 | 0.62 | 0.50 | 2.62 | 2 |
| K3TF.75 | 3/4 | 4.62 | 0.56 | 1.69 | 1.88 | 1.00 | 0.62 | 1.14 | 4 | 0.75 | 0.62 | 3.25 | 3 |
| K3TF1 | 1 | 4.88 | 0.63 | 2.00 | 2.12 | 1.06 | 0.69 | 1.41 | 4 | 0.75 | 0.62 | 3.50 | 3 |
| K3TF1.25 | 1 1/4 | 5.25 | 0.69 | 2.50 | 2.50 | 1.06 | 0.81 | 1.75 | 4 | 0.75 | 0.62 | 3.88 | 4 |
| K3TF1.5 | 1 1/2 | 6.12 | 0.75 | 2.88 | 2.75 | 1.19 | 0.88 | 1.99 | 4 | 0.88 | 0.75 | 4.50 | 6 |
| K3TF2 | 2 | 6.50 | 0.82 | 3.62 | 3.31 | 1.31 | 1.12 | 2.5 | 8 | 0.75 | 0.62 | 5.00 | 7 |
| K3TF2.5 | 2 1/2 | 7.50 | 0.94 | 4.12 | 3.94 | 1.50 | 1.25 | 3 | 8 | 0.88 | 0.75 | 5.88 | 10 |
| K3TF3 | 3 | 8.25 | 1.06 | 5.00 | 4.62 | 1.69 | 1.25 | 3.63 | 8 | 0.88 | 0.75 | 6.62 | 13 |
| K3TF3.5 | 3 1/2 | 9.00 | 1.13 | 5.50 | 5.25 | 1.75 | 1.44 | 4.13 | 8 | 0.88 | 0.75 | 7.25 | 17 |
| K3TF4 | 4 | 10.00 | 1.19 | 6.19 | 5.75 | 1.88 | 1.44 | 4.63 | 8 | 0.88 | 0.75 | 7.88 | 22 |
| K3TF5 | 5 | 11.00 | 1.32 | 7.31 | 7.00 | 2.00 | 1.69 | 5.69 | 8 | 0.88 | 0.75 | 9.25 | 28 |
| K3TF6 | 6 | 12.50 | 1.38 | 8.50 | 8.12 | 2.06 | 1.81 | 6.75 | 12 | 0.88 | 0.75 | 10.62 | 39 |
| K3TF8 | 8 | 15.00 | 1.56 | 10.62 | 10.25 | 2.44 | 2.00 | 8.75 | 12 | 1.00 | 0.88 | 13.00 | 58 |
| K3TF10 | 10 | 17.50 | 1.82 | 12.75 | 12.62 | 2.62 | 2.19 | 10.88 | 16 | 1.12 | 1.00 | 15.25 | 81 |
| K3TF12 | 12 | 20.50 | 1.94 | 15.00 | 14.75 | 2.88 | 2.38 | 12.94 | 16 | 1.25 | 1.12 | 17.75 | 115 |

- * Dimensions conform to ASME B16.5
- * Forged carbon steel material conforms to ASTM A/SA-105
- * NPT threads conform to ASME B1.20.1