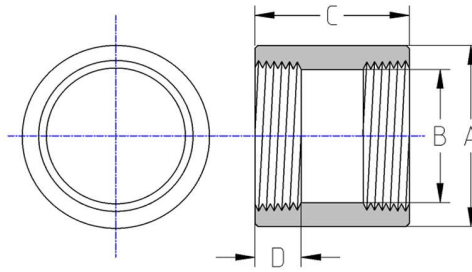




# NPT Full Couplings, 300# Malleable Iron / Black Inches / Pounds



Part #	Nominal Pipe Size	Coupling Length (C)	Outside Diameter Min. (A)	Inside Diameter Min/Max (B)	Internal Thread Length Min. (D)	Nominal Metal Thickness	Approximate Weight Each
K300FC.25MI	1/4	1.37	0.93	0.54/0.58	0.43	0.14	0.17
K300FC.375MI	3/8	1.62	1.12	0.67/0.72	0.47	0.15	0.26
K300FC.5MI	1/2	1.87	1.34	0.84/0.90	0.57	0.16	0.42
K300FC.75MI	3/4	2.12	1.63	1.05/1.11	0.64	0.18	0.65
K300FC1MI	1	2.37	1.95	1.31/1.38	0.75	0.20	0.99
K300FC1.25MI	1 1/4	2.87	2.39	1.66/1.73	0.84	0.22	1.64
K300FC1.5MI	1 1/2	2.87	2.68	1.90/1.97	0.87	0.24	2.04
K300FC2MI	2	3.62	3.28	2.37/2.44	1.00	0.26	3.24
K300FC2.5MI	2 1/2	4.12	3.86	2.87/2.97	1.17	0.31	5.45
K300FC3MI	3	4.12	4.62	3.50/3.60	1.23	0.35	7.30
K300FC4MI	4	4.69	5.67	4.50/4.60	1.38	0.39	11.20

*\*Malleable casting conforms to ASTM A197*

*\*NPT threads conform to ASME B1.20.1*

*\*Dimensions conform to ASME B16.3*