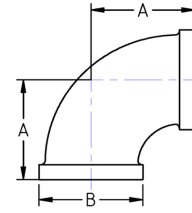


90° Elbows - NPT Threaded

Class 300#

Galvanized Malleable Iron

Inches / Pounds



Part #	NPT Size	Center to End (A)	Outside Diameter (B)	Nominal Metal Thickness	Approximate Weight (in Lbs.)
K30090E.25MIG	1/4	0.94	0.93	0.14	0.20
K30090E.375MIG	3/8	1.06	1.12	0.15	0.29
K30090E.5MIG	1/2	1.25	1.34	0.16	0.47
K30090E.75MIG	3/4	1.44	1.63	0.18	0.66
K30090E1MIG	1	1.63	1.95	0.20	1.16
K30090E1.25MIG	1 1/4	1.94	2.39	0.22	1.88
K30090E1.5MIG	1 1/2	2.13	2.68	0.24	2.46
K30090E2MIG	2	2.50	3.28	0.26	4.17
K30090E2.5MIG	2 1/2	2.94	3.86	0.31	5.30
K30090E3MIG	3	3.38	4.62	0.35	9.65
K30090E4MIG	4	4.50	5.67	0.39	16.00

**Castings conform to ASTM A197*

**Dimensions conform to ASME B16.3*

**NPT Threads conform to ASME B1.20.1*

** Hot-Dipped Galvanized conforms to ASTM A153*