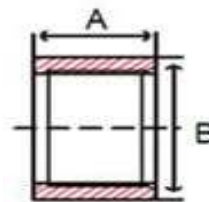


Full Couplings, Class 150

Merchant Carbon Steel

Inches / Pounds



Part #	Thread Size (inch)	(A) Coupling Length	(B) Coupling Outside Diameter	Approximate Weight Each
KFC.125	1/8	0.81	0.56	0.03
KFC.25	1/4	1.18	0.71	0.07
KFC.375	3/8	1.18	0.87	0.1
KFC.5	1/2	1.56	1.06	0.1
KFC.75	3/4	1.62	1.31	0.2
KFC1	1	2.00	1.57	0.3
KFC1.25	1 1/4	2.06	1.90	0.4
KFC1.5	1 1/2	2.06	2.20	0.6
KFC2	2	2.12	2.75	1.0
KFC2.5	2 1/2	3.12	3.25	2.2
KFC3	3	3.25	4.00	3.0
KFC3.5	3 1/2	3.37	4.62	4.1
KFC4	4	3.50	5.00	4.4
KFC5	5	3.75	6.29	7.2
KFC6	6	4.00	7.39	10.5
KFC8	8	5.25	9.62	15.0

****Dimensions and merchant steel material conforms to ASTM A865***

****NPT threads conform to ASME B1.20.1***

****Manufacturing facility is ISO 9001:2008 Certified***

****One End Internal Threaded, Opposite End Internal Threaded***

****1/8 inch to 2 inch thread sizes are NPSC (Straight Threads), 2-1/2 inch and larger are NPT (Tapered)***