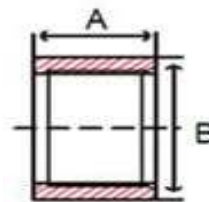


# Half Coupling, Class 150

## Merchant Carbon Steel

### Inches / Pounds



Part #	Thread Size (inch)	(A) Coupling Length	(B) Coupling Outside Diameter	Approximate Weight Each
KHC0.125	1/8	0.380	0.560	0.01
KHC0.25	1/4	0.570	0.710	0.03
KHC0.375	3/8	0.570	0.870	0.05
KHC0.5	1/2	0.750	1.060	0.08
KHC0.75	3/4	0.790	1.310	0.10
KHC1	1	1.000	1.570	0.10
KHC1.25	1 1/4	1.030	1.900	0.20
KHC1.5	1 1/2	1.030	2.200	0.30
KHC2	2	1.060	2.750	0.50
KHC2.5	2 1/2	1.060	3.250	1.10
KHC3	3	1.560	4.000	1.50
KHC3.5	3 1/2	1.600	4.620	2.10
KHC4	4	1.800	5.000	2.20
KHC5	5	1.900	6.290	3.60
KHC6	6	2.000	7.390	5.20

***\*Dimensions and merchant steel material conforms to ASTM A865***

***\*NPT threads conform to ASME B1.20.1***

***\*Manufacturing facility is ISO 9001:2008 Certified***

***\*One End Internal Threaded, Opposite End Butt Weld***

***\*1/8 inch to 2 inch thread sizes are NPSC (Straight Threads), 2-1/2 inch and larger are NPT (Tapered)***