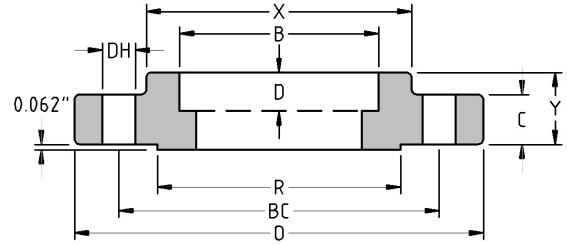




Socket Weld Flange - Sched 40S Bore

CLASS 300, 316 Stainless Steel

Inches / Pounds



Part #	Nominal Pipe Size	Outside Diam. of Flange (O)	Thick. of Flange (C)	Diam. of Raised Face (R)	Diam. of Hub at Base (X)	Length thru Hub (Y)	Diam. of Bore (B)	Depth of Socket (D)	No. of Holes	Diam. of Holes (DH)	Diam. of Bolts	Diam. of Bolt Circle (BC)	Approx. Weight (in Pounds)
K3FSW.25SS	1/2	3.75	0.50	1.38	1.50	0.88	0.88	0.38	4	0.62	0.50	2.62	2
K3FSW.75SS	3/4	4.62	0.56	1.69	1.88	1.00	1.09	0.44	4	0.75	0.62	3.25	3
K3F1SWSS	1	4.88	0.63	2.00	2.12	1.06	1.36	0.50	4	0.75	0.62	3.50	3
K3FSW1.25SS	1 1/4	5.25	0.69	2.50	2.50	1.06	1.70	0.56	4	0.75	0.62	3.88	4
K3FSW1.5SS	1 1/2	6.12	0.75	2.88	2.75	1.19	1.95	0.62	4	0.88	0.75	4.50	6
K3FSW2SS	2	6.50	0.82	3.62	3.31	1.31	2.44	0.69	8	0.75	0.62	5.00	7
K3FSW2.5SS	2 1/2	7.50	0.94	4.12	3.94	1.50	2.94	0.75	8	0.88	0.75	5.88	10
K3FSW3SS	3	8.25	1.06	5.00	4.62	1.69	3.57	0.81	8	0.88	0.75	6.62	13

* Dimensions conform to ASME B16.5

* Forged material conforms to ASTM A182/SA 182

Flange type: Socket Weld for Schedule 40S Pipe, Class: 300, Material: Forged Stainless Steel, Dimensions conform to ANSI B16.5, Material

Flange type: Socket Weld for Schedule 40S Pipe, Class: 300, Material: Forged Stainless Steel, Dimensions conform to ANSI B16.5, Material

Flange type: Socket Weld for Schedule 40S Pipe, Class: 300, Material: Forged Stainless Steel, Dimensions conform to ANSI B16.5, Material

Flange type: Socket Weld for Schedule 40S Pipe, Class: 300, Material: Forged Stainless Steel, Dimensions conform to ANSI B16.5, Material

Flange type: Socket Weld for Schedule 40S Pipe, Class: 300, Material: Forged Stainless Steel, Dimensions conform to ANSI B16.5, Material

Flange type: Socket Weld for Schedule 40S Pipe, Class: 300, Material: Forged Stainless Steel, Dimensions conform to ANSI B16.5, Material

Flange type: Socket Weld for Schedule 40S Pipe, Class: 300, Material: Forged Stainless Steel, Dimensions conform to ANSI B16.5, Material

Flange type: Socket Weld for Schedule 40S Pipe, Class: 300, Material: Forged Stainless Steel, Dimensions conform to ANSI B16.5, Material

conforms to ASTM A182/SA 182, Nominal Pipe Size: ½ inch, Flange outside diameter: 3.75 inches, Flange thickness: 0.5 inches, Diameter
 conforms to ASTM A182/SA 182, Nominal Pipe Size: ¾ inch, Flange outside diameter: 4.62 inches, Flange thickness: 0.56 inches, Diameter
 conforms to ASTM A182/SA 182, Nominal Pipe Size: 1 inch, Flange outside diameter: 4.88 inches, Flange thickness: 0.63 inches, Diameter
 conforms to ASTM A182/SA 182, Nominal Pipe Size: 1 ¼ inch, Flange outside diameter: 5.25 inches, Flange thickness: 0.69 inches, Diameter
 conforms to ASTM A182/SA 182, Nominal Pipe Size: 1 ½ inch, Flange outside diameter: 6.12 inches, Flange thickness: 0.75 inches, Diameter
 conforms to ASTM A182/SA 182, Nominal Pipe Size: 2 inch, Flange outside diameter: 6.5 inches, Flange thickness: 0.82 inches, Diameter
 conforms to ASTM A182/SA 182, Nominal Pipe Size: 2 ½ inch, Flange outside diameter: 7.5 inches, Flange thickness: 0.94 inches, Diameter
 conforms to ASTM A182/SA 182, Nominal Pipe Size: 3 inch, Flange outside diameter: 8.25 inches, Flange thickness: 1.06 inches, Diameter

of Raised Face: 1.38 inches, Diameter of Hub at Base: 1.5 inches, Diameter of Bore: 0.88 inches, Length thru Hub: 0.88 inches, Depth of Socket of Raised Face: 1.69 inches, Diameter of Hub at Base: 1.88 inches, Diameter of Bore: 1.09 inches, Length thru Hub: 1 inches, Depth of Socket of Raised Face: 2 inches, Diameter of Hub at Base: 2.12 inches, Diameter of Bore: 1.36 inches, Length thru Hub: 1.06 inches, Depth of Socket of Raised Face: 2.5 inches, Diameter of Hub at Base: 2.5 inches, Diameter of Bore: 1.7 inches, Length thru Hub: 1.06 inches, Depth of Socket of Raised Face: 2.88 inches, Diameter of Hub at Base: 2.75 inches, Diameter of Bore: 1.95 inches, Length thru Hub: 1.19 inches, Depth of Socket of Raised Face: 3.62 inches, Diameter of Hub at Base: 3.31 inches, Diameter of Bore: 2.44 inches, Length thru Hub: 1.31 inches, Depth of Socket of Raised Face: 4.12 inches, Diameter of Hub at Base: 3.94 inches, Diameter of Bore: 2.94 inches, Length thru Hub: 1.5 inches, Depth of Socket of Raised Face: 5 inches, Diameter of Hub at Base: 4.62 inches, Diameter of Bore: 3.57 inches, Length thru Hub: 1.69 inches, Depth of Socket

ket: 0.38 inches, Number of Bolt Holes: 4, Diameter of Bolt Holes: 0.62 inches, Diameter of Bolts: 0.5 inches, Diameter of Bolt Circle: 2.62 i
 et: 0.44 inches, Number of Bolt Holes: 4, Diameter of Bolt Holes: 0.75 inches, Diameter of Bolts: 0.62 inches, Diameter of Bolt Circle: 3.25
 et: 0.5 inches, Number of Bolt Holes: 4, Diameter of Bolt Holes: 0.75 inches, Diameter of Bolts: 0.62 inches, Diameter of Bolt Circle: 3.5 inc
 ket: 0.56 inches, Number of Bolt Holes: 4, Diameter of Bolt Holes: 0.75 inches, Diameter of Bolts: 0.62 inches, Diameter of Bolt Circle: 3.8
 Socket: 0.62 inches, Number of Bolt Holes: 4, Diameter of Bolt Holes: 0.88 inches, Diameter of Bolts: 0.75 inches, Diameter of Bolt Circle:
 ket: 0.69 inches, Number of Bolt Holes: 8, Diameter of Bolt Holes: 0.75 inches, Diameter of Bolts: 0.62 inches, Diameter of Bolt Circle: 5 in
 ocket: 0.75 inches, Number of Bolt Holes: 8, Diameter of Bolt Holes: 0.88 inches, Diameter of Bolts: 0.75 inches, Diameter of Bolt Circle: 5.8
 et: 0.81 inches, Number of Bolt Holes: 8, Diameter of Bolt Holes: 0.88 inches, Diameter of Bolts: 0.75 inches, Diameter of Bolt Circle: 6.62 i

inches, Approximate weight: 2 lbs
inches, Approximate weight: 3 lbs
hes, Approximate weight: 3 lbs
3 inches, Approximate weight: 4 lbs
4.5 inches, Approximate weight: 6 lbs
ches, Approximate weight: 7 lbs
38 inches, Approximate weight: 10 lbs
inches, Approximate weight: 13 lbs